

## Appendix E: All Columns Test Result Curves

Following graphs provide the results obtained from DAQ in each column test session. Figures E1 to E6 show the load versus strain curves for all columns at all available sensor attached to the specimen.

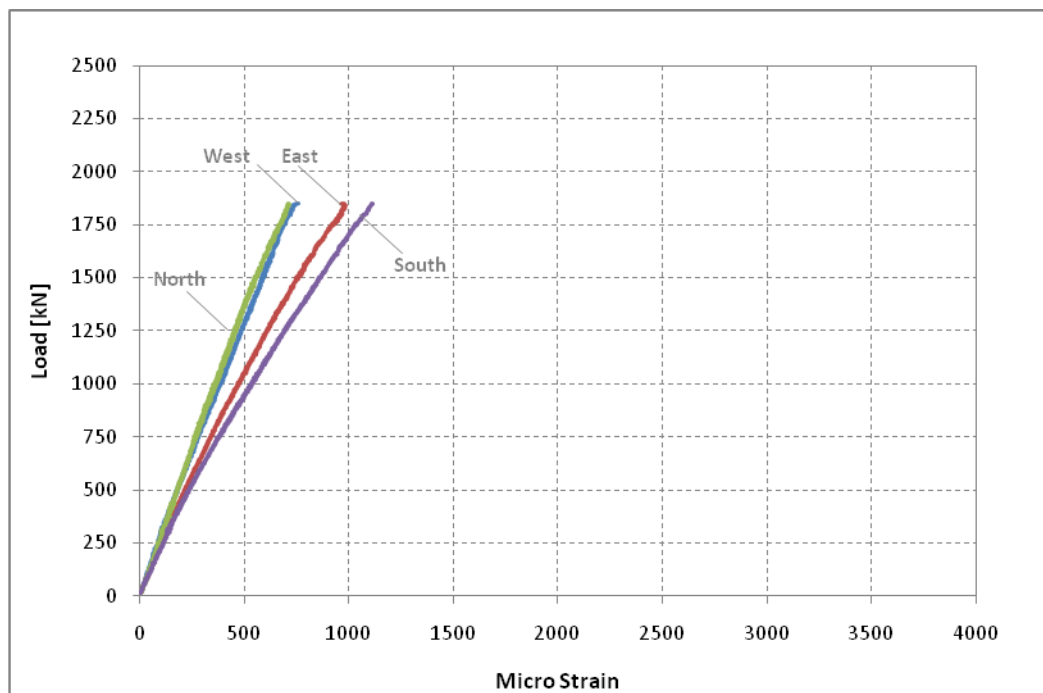


Figure E1: Column FF-NC-1, all pi-gauges

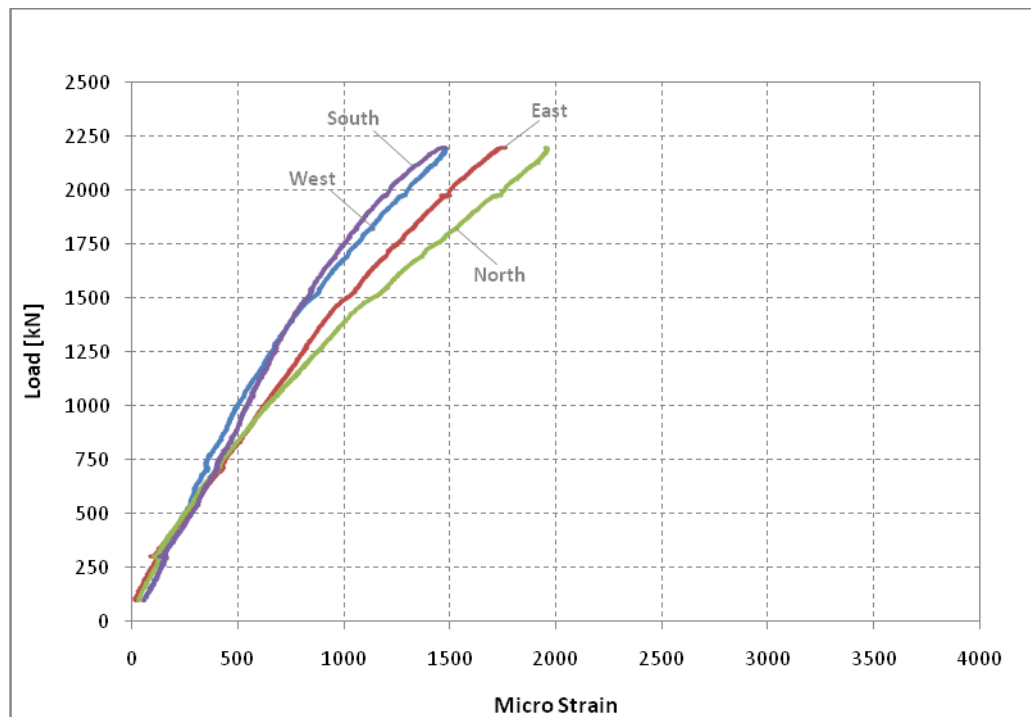


Figure E2: Column CT-NC-1, all pi-gauges

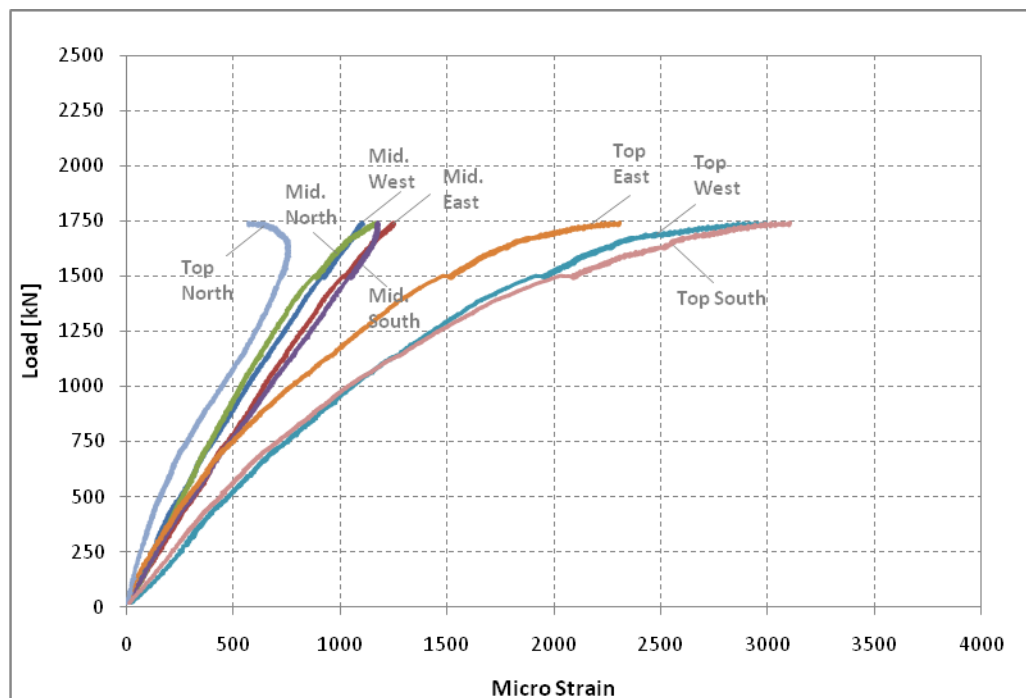


Figure E3: Column FF-FAC, all pi-gauges

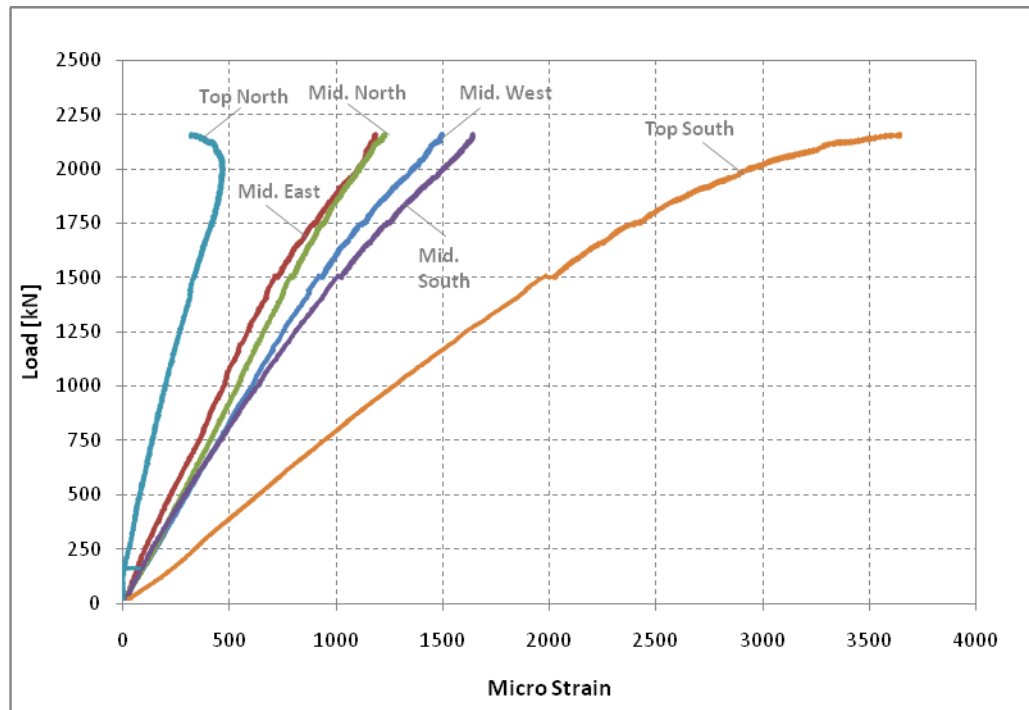


Figure E4: Column CT-FAC, all pi-gauges

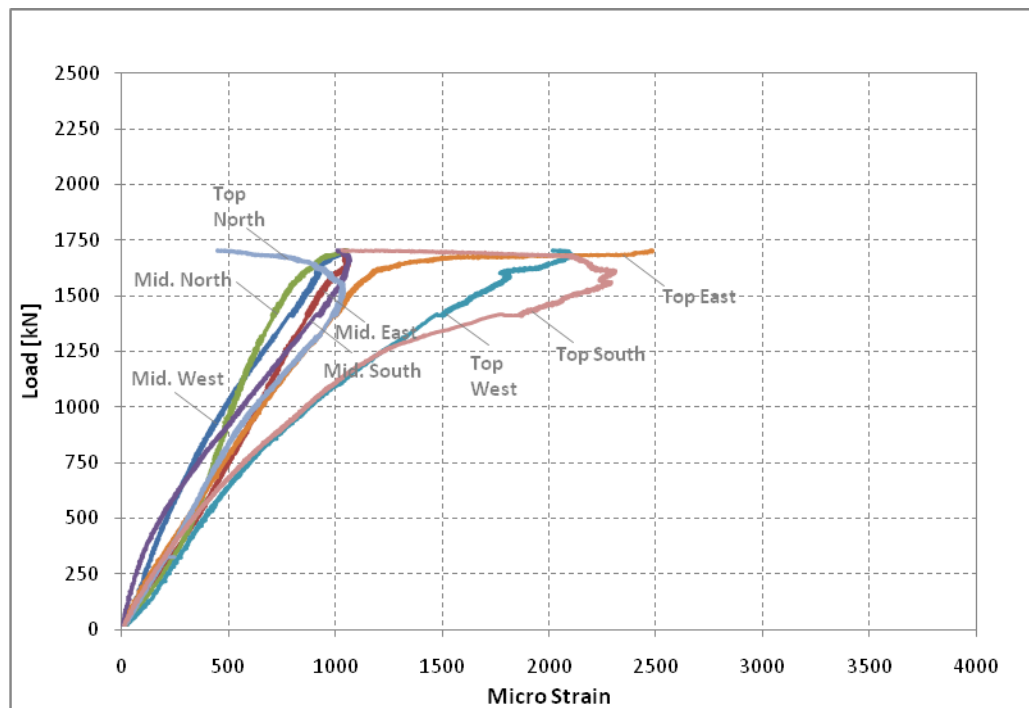


Figure E5: Column FF-NC-2, all pi-gauges

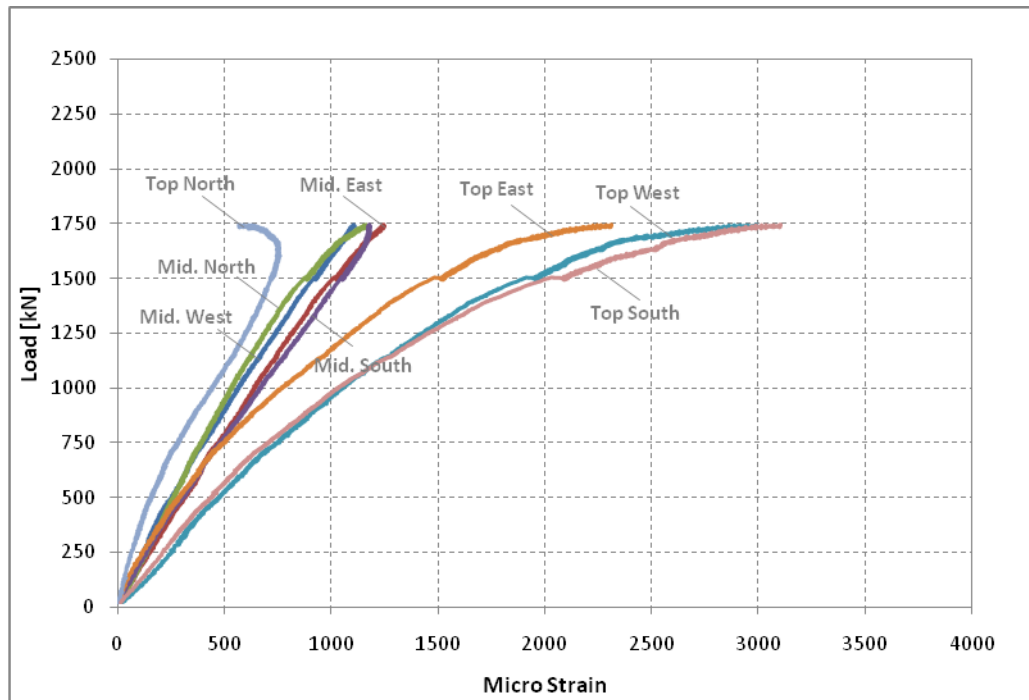


Figure E6: Column CT-NC-2, all pi-gauges